



Visual Arts Virtual Learning

**High School**

**Drawing II**

**Unit: Perspective**

**Lesson:**

**Urban Sketching to  
Surrealism Perspectives**

**April 15, 2020**



## Drawing II

# Lesson: Urban Sketching to Surrealism Perspectives

April 15, 2020

### **Objective/Learning Target:**

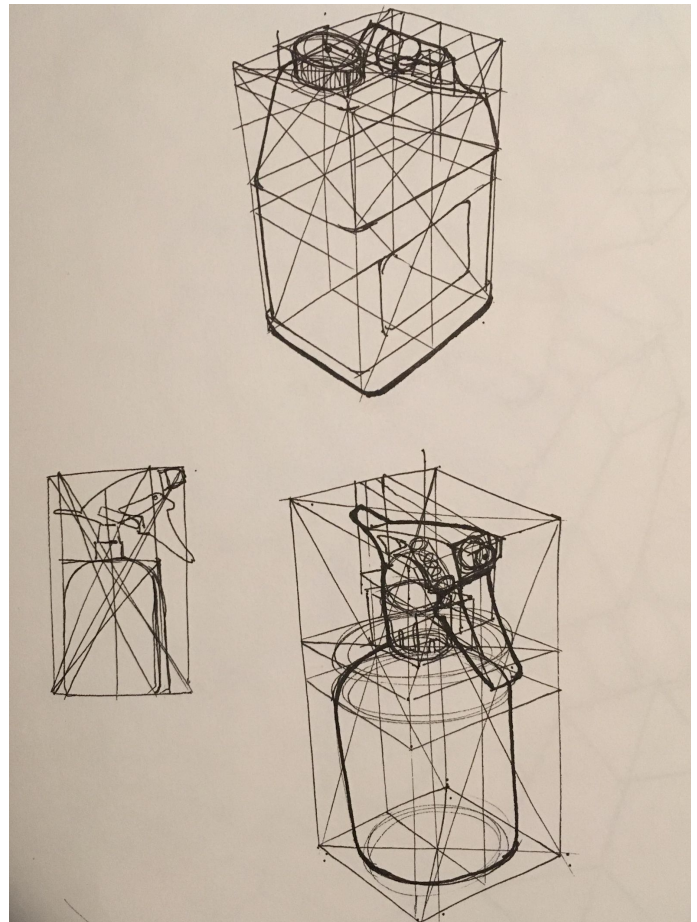
The student will create an original drawing that correctly shows linear perspective by utilizing vanishing points and horizon lines as well as observational skills. Students will work from previous thumbnails. Students will implement references as well as imaginative items within a picture plane that will change the appearance of reality to something with surrealistic qualities.

## Bell Ringer:

### Choice Sketch Warm up

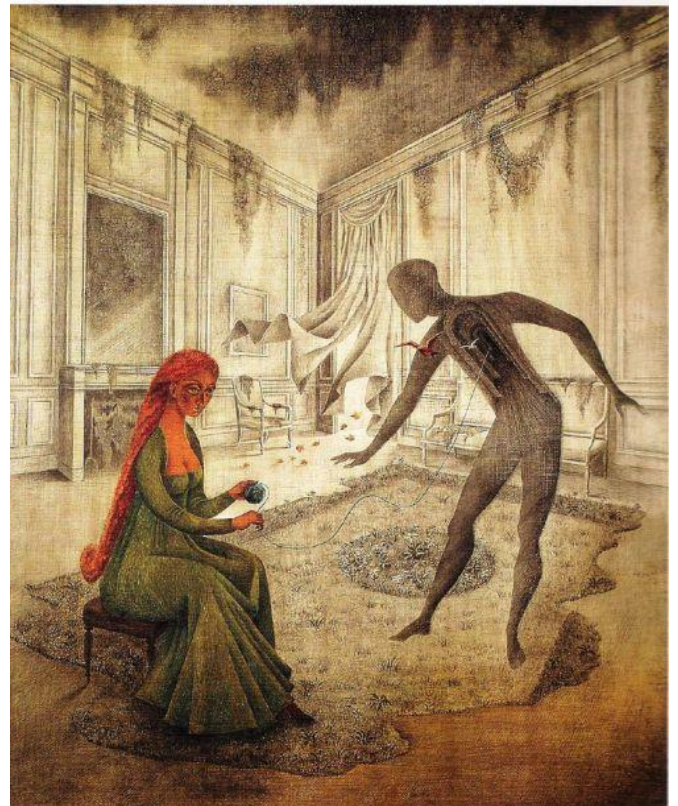
1. Draw an item at home with Perspective Lines using 2 point perspective.
2. Draw the contents in a trash can.

Examples:



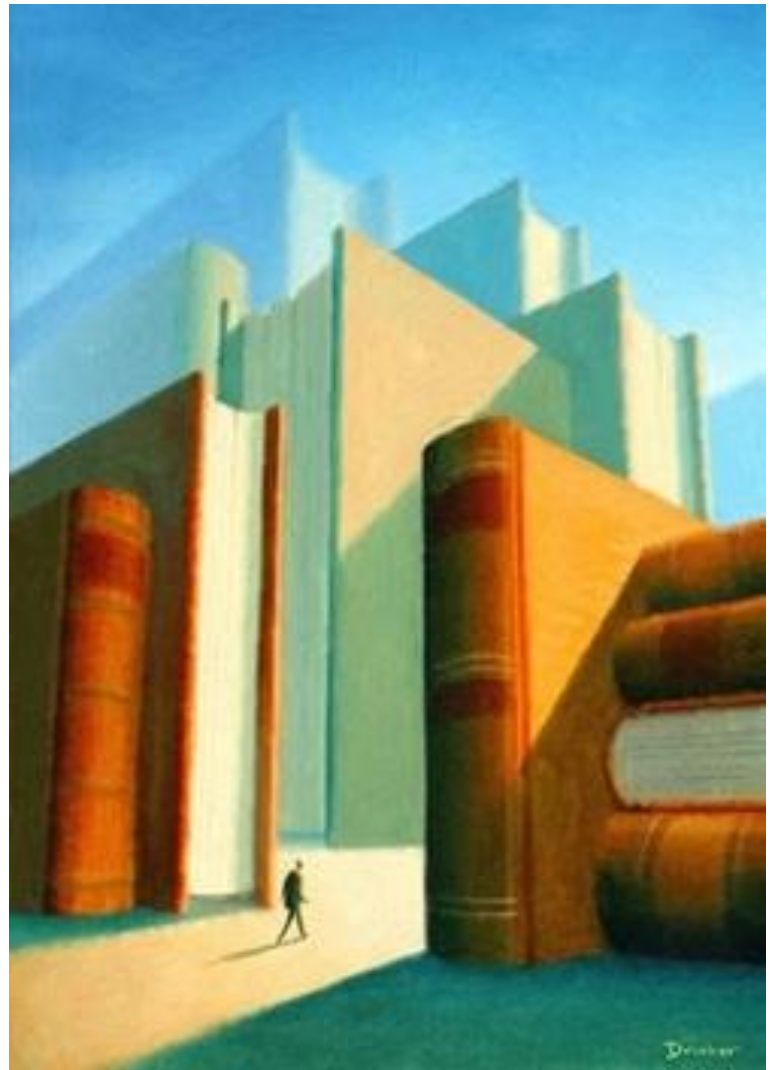
## Lesson:

This is a surrealist artwork, how would you describe what you see?



## Lesson:

What do you see happening? Is this something that happens in a typical daily occurrence?



## Lesson:

What do you see happening? Is this something that happens in a typical daily occurrence?





## **Lesson:**

### **What is Surrealism?**

**Surrealism is an art and cultural movement that started in the early 1920's. The artwork was based on philosophical movements at that time. The artwork had strange and unexpected juxtapositions (odd items in unique relation). Surrealism developed out of the Dada art period from World War I. Dada questioned arts purpose and functionality within gallery and museums. From this it inspired new found philosophies, artwork, questioned formal techniques and applications.**



## **Lesson:**

**Things to know about Surrealism:**

**The surrealist focus on dreams, psychoanalysis, and fantastic imagery.**

**Some may even be considered hyper-realistic.**

**Scales (size and proportion) might be rearranged to create an awkward setting to apply juxtaposition (odd things in unusual combinations) to the composition.**

**Natural laws are reversed or skewed.**

**Double images echo and repeat**

**Images used represent and symbolize ideals or messages.**





## **Activity Today is to Brainstorm:**

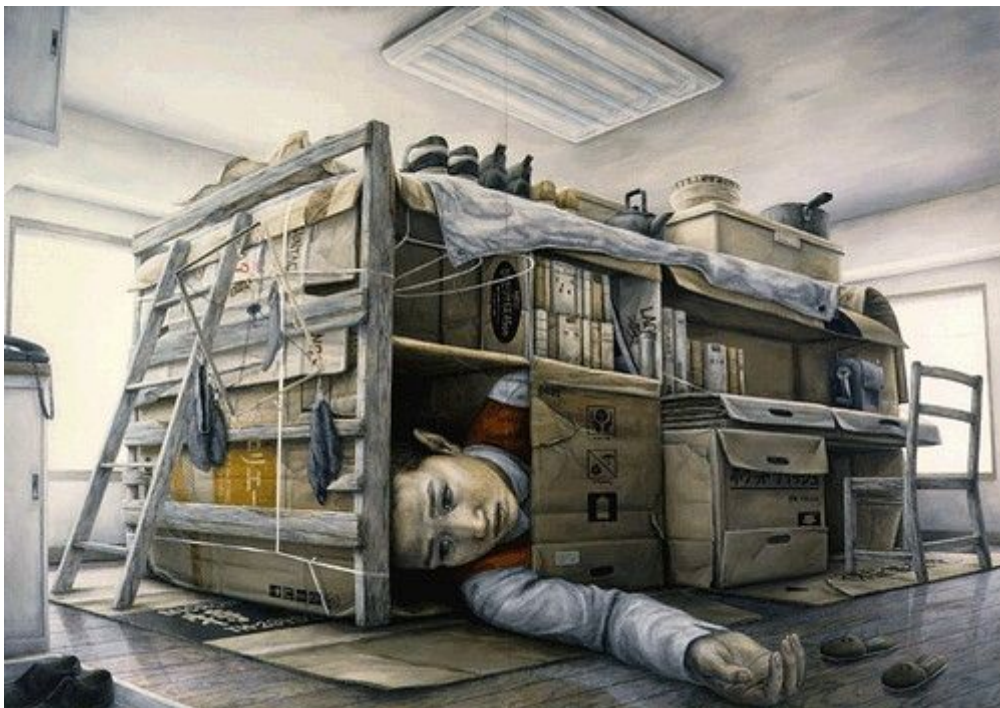
- **Take or find photos of the space or added images you will include in your artwork, this works best if you have something to reference make sure it uses the same lighting and perspective.**
- **Find the vanishing points as closely as possible. Apply them to what you use for your perspective.**
- **Imagine what can occur in this space. - Think: “what if” thoughts: what if automobiles were made of brick? What if alligators played pool?**

## Artist Examples:

Tetsuya Ishida



## Artist Examples:





## Check for Understanding:

1. Will you have a theme or statement for your work? (alienation, loneliness, advertising, religion, etc.)
2. Decide what you will use for your perspective. Will it be a landscape or a room? What is easier/challenging for you, a two point or one point perspective?
3. What items will you add to make it more surreal? Why?
4. How would you describe the artists artworks?
5. From their artworks could you sense a feeling? What do you think they used as symbols and why?
6. Why do you think it is important that surrealism uses symbols?
7. What does juxtaposition mean?
8. What inspired the surrealist movement?



## **Announcement:**

**Please post your artwork on twitter and/or  
instagram using the hashtag #isddoesart**

**All the teachers are excited to see our students  
and their works!!**



## Resources and Supporting Material:

[Rene Magritte- A Retrospective](#)

[Step by step Room Perspective](#)

[One point interior spaces](#)

[One point cityscape](#)

[Two point room perspective](#)

[Two point room perspective #2](#)

[Two point perspective- Easy/for beginners](#)

[One point- Angles](#)

[Two point perspective- house](#)